



Ceiling Cassette -4way- FDT

Model No.

- FDT28KXZE1
- FDT36KXZE1
- FDT45KXZE1
- FDT56KXZE1
- FDT71KXZE1
- FDT90KXZE1
- FDT112KXZE1
- FDT140KXZE1
- FDT160KXZE1



Draft Prevention Panel (Option)

Remote control (option)

Wired



Wireless

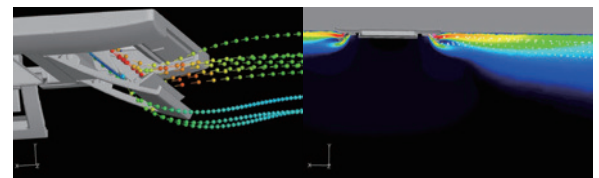
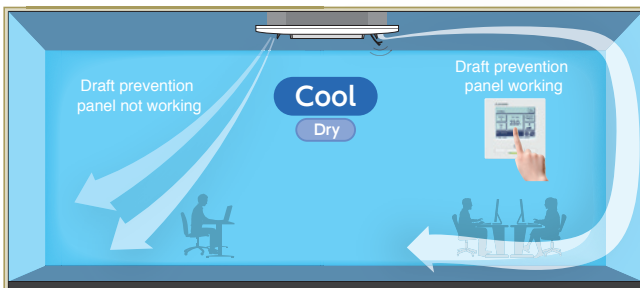


Draft Prevention Panel

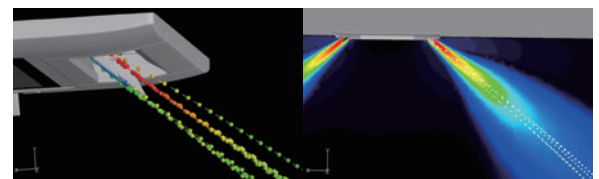
(Option)

Draft Prevention Panel prevents cold / hot draft being blown directly on the user.
It is possible to set Draft Prevention Panel for each air outlet.

Advanced airflow control technology cultivated through aircraft development.



Draft Prevention Panel working



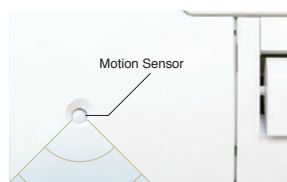
Draft Prevention Panel placed at off position

User can position panels by using the remote controller only (RC-EX3A, RCN-T-5AW-E2) when Draft Prevention Panel is available.

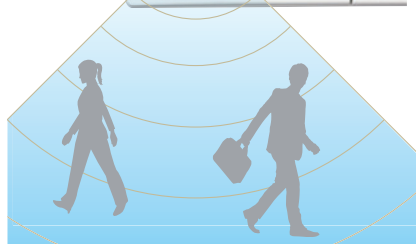
Motion Sensor

(Option)

Motion sensor is equipped in the corner of the panel and detects the presence/absence and activity of humans in a room to improve the comfort and energy saving performance of the unit.



LB-T-5W-E



Improve the aerodynamic performance of the unit

New designed component has better aerodynamic performance and achieve lower noise.

New design turbo fan



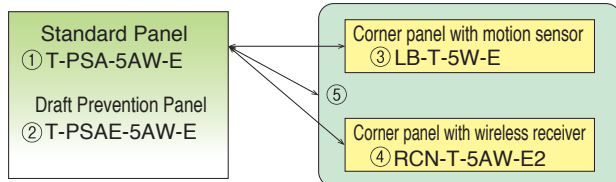
Fan guard (standard equipment)



Panel select pattern

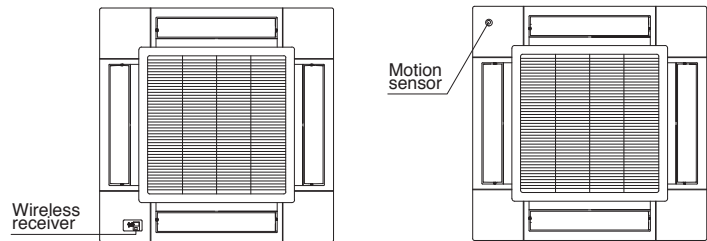
(Option)

8 patterns of panel are available.



- ① Standard Panel only
- ①+③ Standard Panel with corner panel with motion sensor
- ①+④ Standard Panel with corner panel with wireless receiver
- ①+⑤ Standard Panel with corner panel with motion sensor & corner panel with wireless receiver
- ② Draft Prevention Panel only
- ②+③ Draft Prevention Panel with corner panel with motion sensor
- ②+④ Draft Prevention Panel with corner panel with wireless receiver
- ②+⑤ Draft Prevention Panel with corner panel with motion sensor & corner panel with wireless receiver

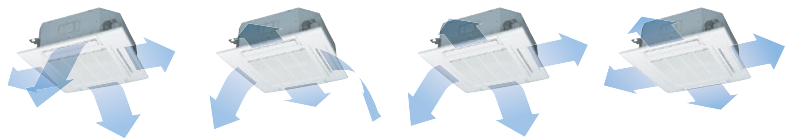
Installation position of Wireless kit and Motion sensor kit



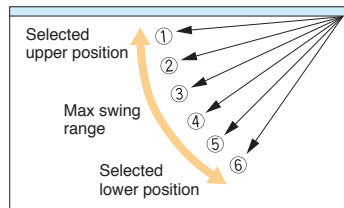
*Wireless receiver and Motion sensor can be installed to the position as shown

Individual flap control system

According to room conditions, four directions of air flow can be controlled individually by utilizing the flap control system. Individual flap control is available even after installation.



Flap can swing within an upper and lower flap range position within can be selected with a wired remote control.

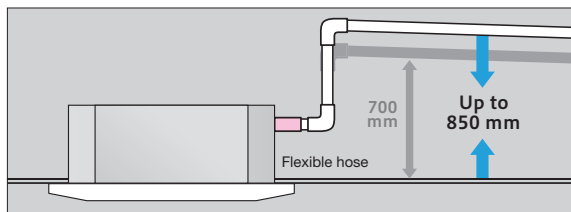


*The wireless remote control is not applicable to the Individual flap control system.



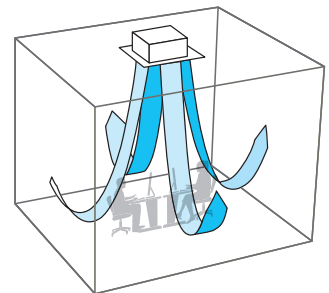
850mm Drain Pump

Drain can be discharged upwards by 850mm from the ceiling surface. It allows a piping layout with a high degree of freedom. Depending on the installation location and 185mm flexible hose as a standard equipment supports easy workability.



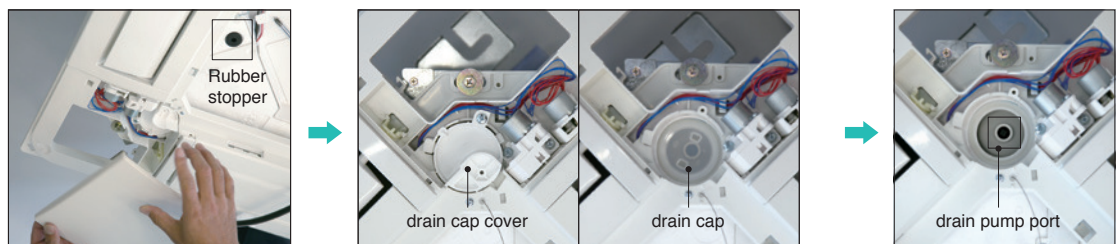
Suitable for High ceilings

The Powerful blowout of ultra high tap carry comfortable air flow to foot even in high ceiling. It is ideal for high ceiling offices and stores, etc., with a wide, uniform air flow throughout the room.



Easy check of drain pan

Easy inspection of the condition of the drain pan is possible by removing rubber corner lid only.



Remove corner lid.

Remove drain cap cover and check the condition. It is necessary to clean-up, firstly remove the rubber stopper to drain water out and secondly remove the drain cap.

Clean up the area around the drain pump port.



Specifications

Item	Model	FDT28KXZE1	FDT36KXZE1	FDT45KXZE1	FDT56KXZE1	FDT71KXZE1
Nominal cooling capacity	kW	2.8	3.6	4.5	5.6	7.1
Nominal heating capacity	kW	3.2	4.0	5.0	6.3	8.0
Power source		1 Phase 220-240V, 50Hz				
Power consumption	Cooling	0.04-0.04			0.07-0.07	0.08-0.08
	Heating	0.04-0.04			0.07-0.07	0.08-0.08
Sound power level	dB(A)	49		50	55	62
Sound pressure level	dB(A)	P-Hi:38 Hi:33 Me:30 Lo:28		P-Hi:38 Hi:33 Me:31 Lo:29	P-Hi:44 Hi:33 Me:31 Lo:29	P-Hi:47 Hi:35 Me:32 Lo:28
Exterior dimensions H x W x D	mm	Unit:236x840x840 Panel:35x950x950				
Net weight	kg	Unit:20 Standard Panel:5			Unit:21.5 Standard Panel:5	
Air flow	m ³ /min	P-Hi:20 Hi:14 Me:12 Lo:10	P-Hi:20 Hi:14 Me:12 Lo:10	P-Hi:20 Hi:15 Me:13 Lo:10	P-Hi:26 Hi:16 Me:13 Lo:11	P-Hi:28 Hi:17 Me:14 Lo:12
Outside air intake		Possible				
Panel		T-PSA-5AW-E, T-PSAE-5AW-E				
Air filter, Q'ty		Pocket Plastic net x1 (Washable)				
Remote control(option)		wired:RC-EX3A, RC-E5, RCH-E3 wireless:RCN-T-5AW-E2				
Installation data Refrigerant piping size	mm(in)	Liquid line:ø6.35(1/4") Gas line:ø9.52(3/8")	Liquid line:ø6.35(1/4") Gas line:ø12.7(1/2")			Liquid line:ø9.52(3/8") Gas line:ø15.88(5/8")

Item	Model	FDT90KXZE1	FDT112KXZE1	FDT140KXZE1	FDT160KXZE1
Nominal cooling capacity	kW	9.0	11.2	14.0	16.0
Nominal heating capacity	kW	10.0	12.5	16.0	18.0
Power source		1 Phase 220-240V, 50Hz			
Power consumption	Cooling	0.13-0.13	0.14-0.14		
	Heating	0.13-0.13	0.14-0.14		
Sound power level	dB(A)	65	66		
Sound pressure level	dB(A)	P-Hi:49 Hi:38 Me:36 Lo:31	P-Hi:49 Hi:39 Me:37 Lo:31	P-Hi:49 Hi:42 Me:39 Lo:32	P-Hi:49 Hi:42 Me:39 Lo:33
Exterior dimensions H x W x D	mm	Unit:298x840x840 Panel:35x950x950			
Net weight	kg	Unit:25 Standard Panel:5			
Air flow	m ³ /min	P-Hi:37 Hi:25 Me:22 Lo:15	P-Hi:38 Hi:26 Me:23 Lo:17	P-Hi:38 Hi:28 Me:25 Lo:18	P-Hi:38 Hi:29 Me:26 Lo:19
Outside air intake		Possible			
Panel		T-PSA-5AW-E, T-PSAE-5AW-E			
Air filter, Q'ty		Pocket Plastic net x1 (Washable)			
Remote control(option)		wired:RC-EX3A, RC-E5, RCH-E3 wireless:RCN-T-5AW-E2			
Installation data Refrigerant piping size	mm(in)	Liquid line:ø9.52(3/8") Gas line:ø15.88(5/8")			

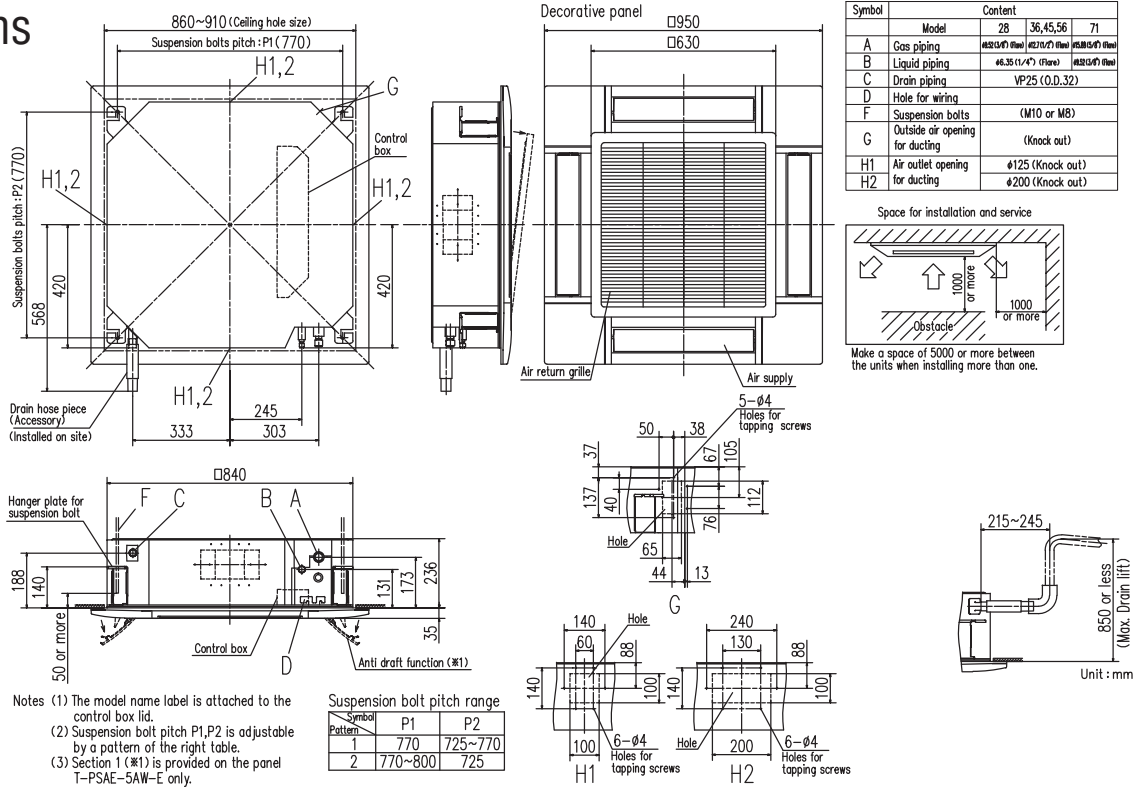
1. The data are measured under the following conditions(ISO-T1). Cooling: Indoor temp. of 27°CDB, 19°CWB, and outdoor temp. of 35°CDB. Heating: Indoor temp. of 20°CDB, and outdoor temp. of 7°CDB, 6°CWB.
2. Sound pressure level indicates the value in an anechoic chamber. During operation these values are somewhat higher due to ambient conditions.



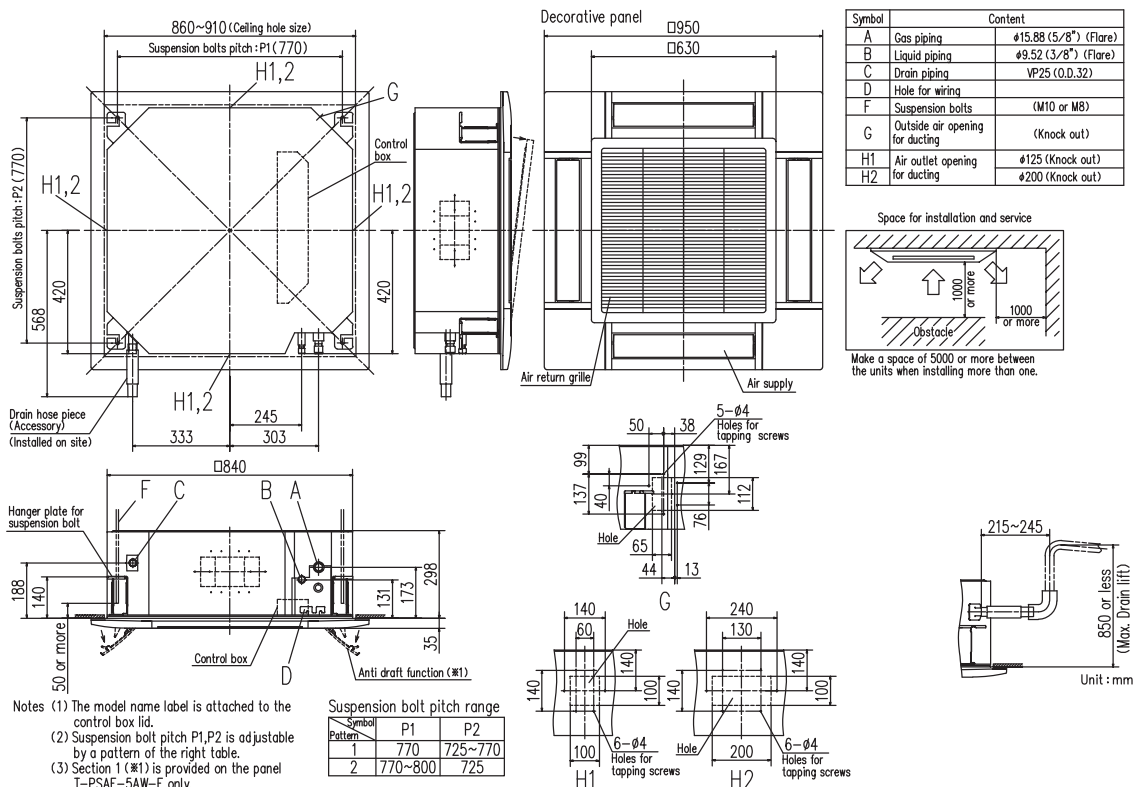
Dimensions

All measurements in mm.

FDT28KXZE1
36KXZE1
45KXZE1
56KXZE1
71KXZE1



FDT90KXZE1
112KXZE1
140KXZE1
160KXZE1





Ceiling Cassette -4way Compact FDTC

NEW

Model No.

- FDTC15KXZE1
- FDTC22KXZE1
- FDTC28KXZE1
- FDTC36KXZE1
- FDTC45KXZE1
- FDTC56KXZE1



Draft Prevention Panel (option)

Remote control (option)

Wired



RC-EX3A RC-E5 RCH-E3

Wireless



RCN-TC-5AW-E2

European design & Flat panel



Thin Panel

Big Louver

Unique Grille Design

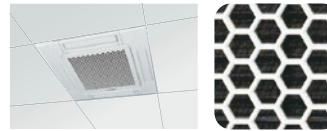
Compact Design

□ 700mm → □ 620mm

It's only 14kg

Height of thin panel and main body is only 248 mm allowing it to be a very easy installation.

Integrated ceiling system design 600x600

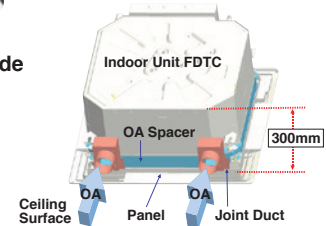


A grille designed with a unique structure and a clean white panel that blends with the room. This design was invented by zweigrad GmbH & Co. KG in Germany.

Taking OA (Outside Air) into inside

Fresh air can be taken in without optional parts. When the fresh air is insufficient, optional parts can be used.

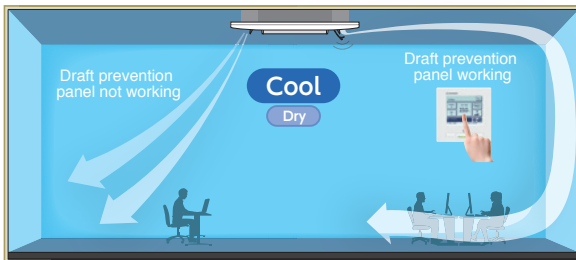
OA Spacer TC-OAS-E2(option)
Joint Duct TC-OAD-E(option)



Draft Prevention Panel

(Option)

Draft Prevention Panel prevents cold/hot draft being blown directly on the user. It is possible to set Draft Prevention Panel for each air outlet.



User can position panels by using the remote controller only (RC-EX3A, RCN-TC-5AW-E2) when Draft Prevention Panel is available.

Individual flap control system

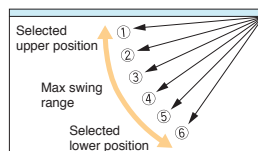
According to room temperature conditions, four directions of air flow can be controlled individually by following Flap control system.



Individual flap control is available even after installation.

The flap can swing within the range of upper and lower flap position selected with wired remote control.

*The wireless remote control is not applicable to the Individual flap control system.



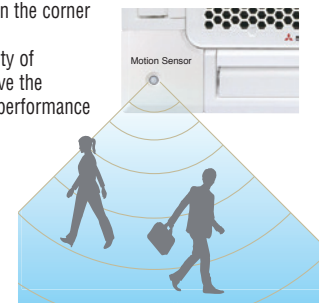
Motion Sensor

(Option)

Motion sensor is equipped in the corner of the panel and detects the presence/absence and activity of humans in a room to improve the comfort and energy saving performance of the unit.



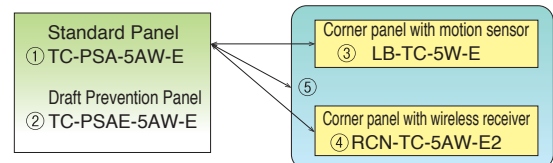
LB-TC-5W-E



Panel select pattern

(Option)

8 patterns of panel are available. Please refer to P69.



850mm Drain Pump

Drain can be discharged upward by 850 mm from the ceiling surface close to the indoor unit. It allows a piping layout with a high degree of freedom depending on the installation location.

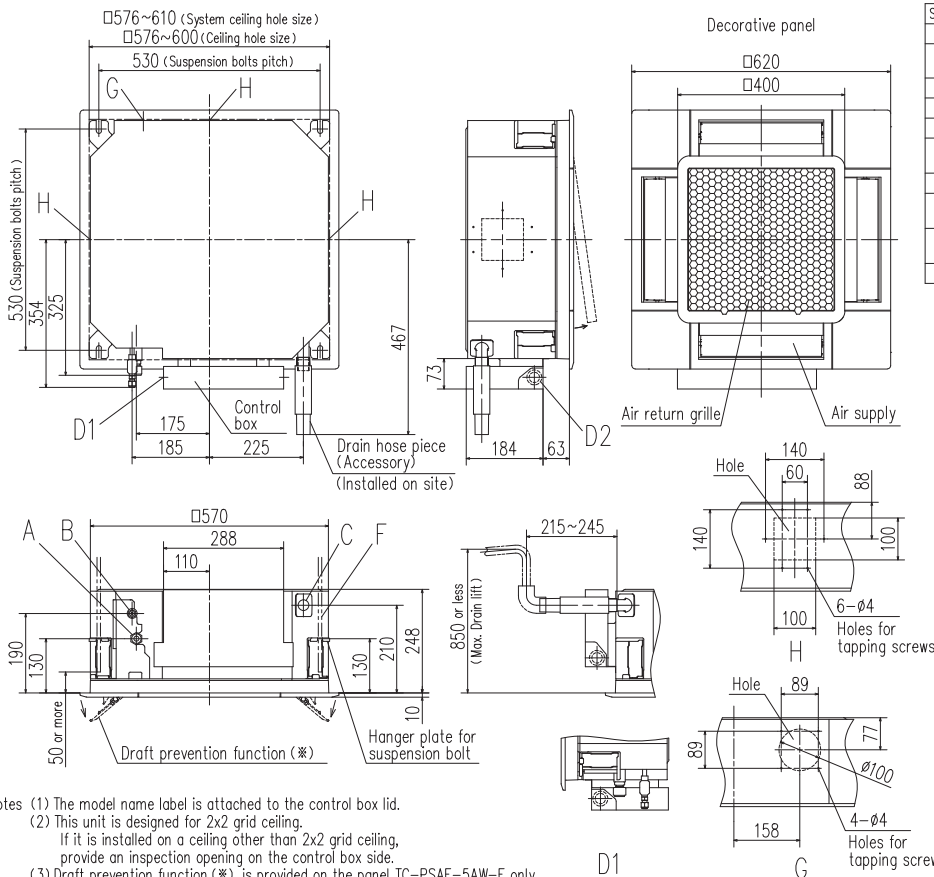
Specifications

Item	Model	FDTC15KXZE1	FDTC22KXZE1	FDTC28KXZE1	FDTC36KXZE1	FDTC45KXZE1	FDTC56KXZE1
Nominal cooling capacity	kW	1.5	2.2	2.8	3.6	4.5	5.6
Nominal heating capacity	kW	1.7	2.5	3.2	4.0	5.0	6.3
Power source		1 Phase 220-240V, 50Hz					
Power consumption	Cooling	0.03-0.03			0.04-0.04	0.05-0.05	0.06-0.06
	Heating	0.03-0.03			0.04-0.04	0.05-0.05	0.06-0.06
Sound power level	dB(A)	Cooling:47 Heating:46	49		Cooling:54 Heating:53	Cooling:58 Heating:57	60
Sound pressure level	Cooling	P-Hi:33 Hi:30 Me:28 Lo:25	P-Hi:35 Hi:32 Me:29 Lo:25		P-Hi:39 Hi:36 Me:31 Lo:26	P-Hi:43 Hi:39 Me:36 Lo:28	P-Hi:47 Hi:43 Me:39 Lo:31
	Heating	P-Hi:33 Hi:30 Me:26 Lo:22	P-Hi:35 Hi:32 Me:29 Lo:25		P-Hi:39 Hi:36 Me:31 Lo:26	P-Hi:43 Hi:39 Me:36 Lo:28	P-Hi:47 Hi:43 Me:39 Lo:31
Exterior dimensions H x W x D	mm	Unit:248x570x570 Panel:10x620x620					
Net weight	kg	Unit:12.5 Standard Panel:2.5	Unit:13 Standard Panel:2.5		Unit:14 Standard Panel:2.5		
Air flow	Cooling	P-Hi:8 Hi:7 Me:6 Lo:5	P-Hi:9 Hi:8 Me:7 Lo:6		P-Hi:10 Hi:9 Me:8 Lo:6	P-Hi:12 Hi:10 Me:9 Lo:7	P-Hi:14 Hi:12 Me:10 Lo:8
	Heating	P-Hi:8 Hi:7 Me:6 Lo:5	P-Hi:9 Hi:8 Me:7 Lo:6		P-Hi:10 Hi:9 Me:8 Lo:6	P-Hi:12 Hi:10 Me:9 Lo:7	P-Hi:14 Hi:12 Me:10 Lo:8
Outside air intake		Possible					
Panel		TC-PSA-5AW-E, TC-PSAE-5AW-E					
Air filter, Q'ty		Pocket Plastic net x1 (Washable)					
Remote control(option)		wired:RC-EX3A, RC-E5, RCH-E3 wireless:RCN-TC-5AW-E2					
Installation data		Liquid line:ø6.35(1/4") Gas line:ø9.52(3/8")			Liquid line:ø6.35(1/4") Gas line:ø12.7(1/2")		
Refrigerant piping size	mm(in)						

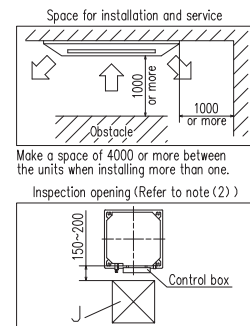
1. The data are measured under the following conditions(ISO-T1). Cooling: Indoor temp. of 27°CDB, 19°CWB, and outdoor temp. of 35°CDB. Heating: Indoor temp. of 20°CDB, and outdoor temp. of 7°CDB, 6°CWB.
2. Sound pressure level indicates the value in an anechoic chamber. During operation these values are somewhat higher due to ambient conditions.

Dimensions

All measurements in mm.



Symbol	Content	
	Model	15,22,28 36,45,56
A	Gas piping	ø9.52 (3/8") (Flare) ø12.7 (1/2") (Flare)
B	Liquid piping	ø6.35 (1/4") (Flare)
C	Drain piping	VP25 (O.D.32)
D1	Power supply connection	
D2	Remote control code and signal wiring connection	
F	Suspension bolts	(M10 or M8)
G	Outside air opening for ducting	(Knock out)
H	Air outlet opening for ducting	ø125 (Knock out)
J	Inspection opening	450X450



- Notes (1) The model name label is attached to the control box lid.
 (2) This unit is designed for 2x2 grid ceiling.
 If it is installed on a ceiling other than 2x2 grid ceiling, provide an inspection opening on the control box side.
 (3) Draft prevention function (※) is provided on the panel TC-PSAE-5AW-E only.