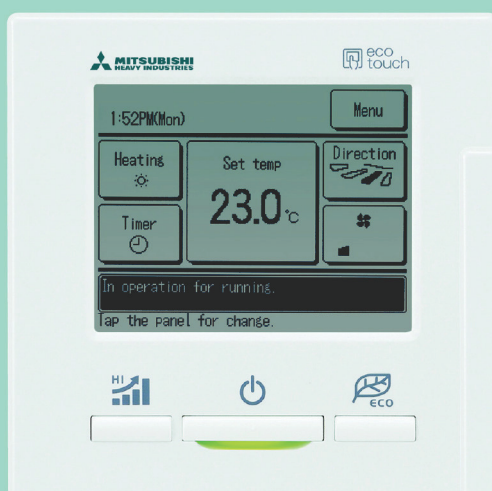




## Simple use with advanced settings **REMOTE CONTROL**

Easy touch and Easy view with full dot Liquid Crystal display



RC-EX1A

Bright screen



RC-EX3

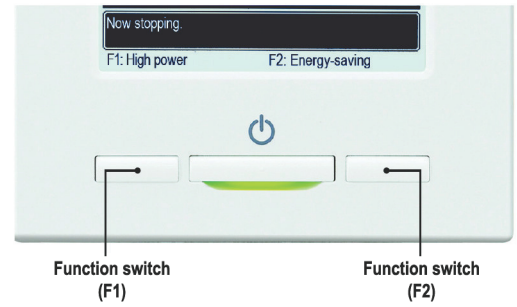
**New!**

# New functions

## Function Switch

The function switch allows you to select and set two functions that you desire among the six available functions shown.

These functions can be used by simply pressing the button after they are set, allowing you to use your preferable functions immediately.



### 1 High Power Mode

High Power Mode achieve excessive cooling / heating capacity for 15 minutes to quickly adjust the room temperature to a comfortable level.



### 2 Energy Saving Mode

Temperature is set to optimized to save energy without losing comfort.



### 3 Quiet Mode

Outdoor unit starts to operate quietly by activating this mode. The time of this mode can be set in conjunction with Indoor Silent Timer.



### 4 Home Leave Mode

Home leave mode maintains the room temperature at a moderate level.



### 5 Favorite Mode

Operation mode, set temperature, fan speed and air flow direction are automatically adjusted to the programmed favorite setting.

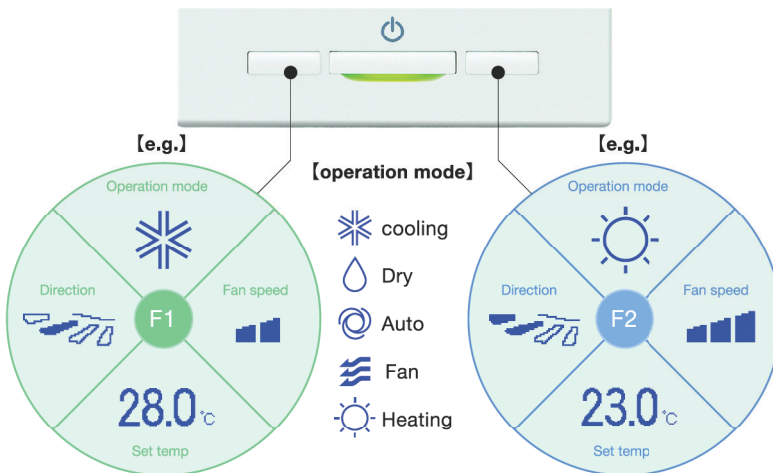


### 6 Filter Sign

Announces the due time for cleaning the air filter.

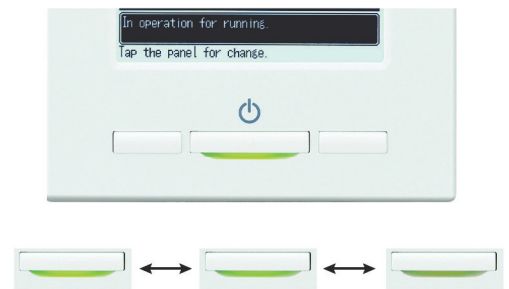
## Favorite Mode

Operation mode, set temperature, fan speed and air flow direction are memorized and allocated to two buttons that can be operated by one touch.



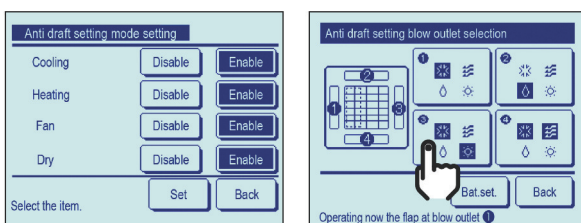
## Adjusting Brightness of the Operation lamp

The brightness of the operation lamp behind Run/Stop switch can be adjusted by 10 stages.



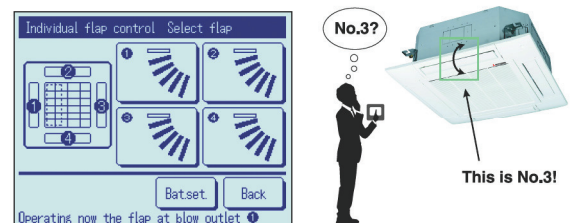
## Draft prevention setting (only FDT series)

User can enable/disable the motion of panel with anti draft for each blow outlet for each operation mode.



## Easy modification of Air Flow

User can visually confirm and set the direction of louvres using the visual display on the remote controller.



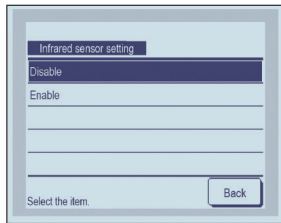
# Motion sensor control

Presence of humans and the amount of motion are detected by a motion sensor to perform various controls.

**1** Select Enable / Disable  
**Motion sensor control**



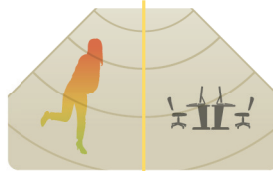
Enable / Disable



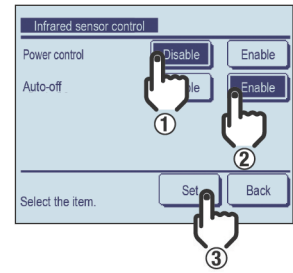
Select [Enable] / [Disable] for the motion sensor of the indoor unit connected to the R/C.

**2** Select Enable / Disable per control

- Power control
- Auto-off



Enable / Disable



# Backup Control

Control restricted to two indoor units (two groups)

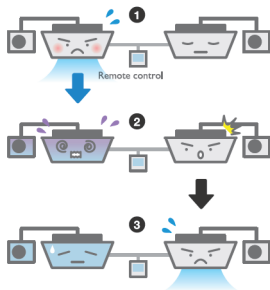


## Fault backup control



### Keep back up all the time!

If one of the two indoor units malfunctions and stops its operation, the other starts backup operation so that users' comfort will not be compromised.

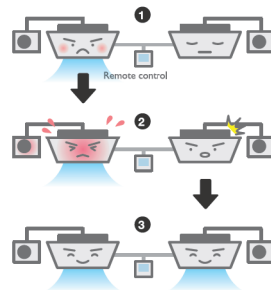


## Capacity backup control



### Maintains users' comfort!

When the control system detects either of two units is operating with overload, the other unit covers the capacity.

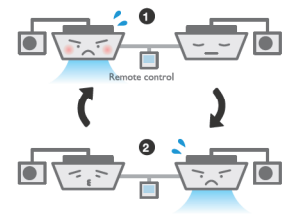


## Rotational operation control



### Energy saving and longer life!

By operating two indoor units alternately, their chronological changes are equalized. (The alternate operation cycle can be specified in a range from 10 hours to 990 hours in increments of 10 hours.)



# Additional functions of External Input / Output

The external input/output of indoor unit by remote controller can set input/output based on user's demand.



Remote surveillance system



Card key on-off

## External Input

	CNT (1-6) CNTA (1-2)
Input	On/Off Permission/Prohibition Cooling/Heating Emergency Stop
<b>Newly added</b>	Set temp. shift Forced thermo-off IU operation stop Silent mode

## External Output

	CNT (New)
2	Output - Operation - Heating - Compressor ON (thermo-ON)
3	Output - Inspection
4	Output - Cooling (defrosting) - Fan operation - Fan operation with Phi or Hi - Fan operation with Me or Lo - Defrosting (oil return in heating operation) - Ventilation
5	Output - Heater ON - Free cooling - IU overload alarm

**Newly added**