

<Building Management Systems> SC-WBGW256 (Web gateway+BACnet gateway)

Production by order

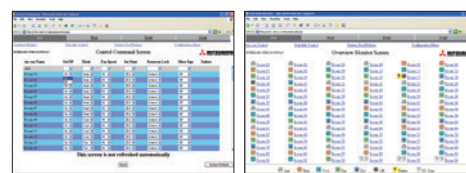
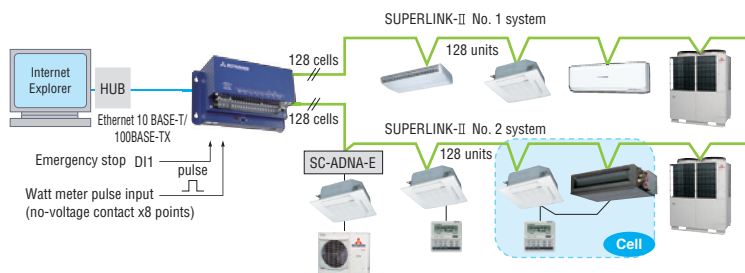
SC-WBGW256 controls and monitors of up to 256 cells (some cells can have two or more indoor units and total number of indoor units can be up to 256 units) centralised to a network PC using the Superlink-II web gateway. Simple installation is assured with no special software requirements, operation is via Internet Explorer. A low power embedded CPU and compact flash ROM ensure a large storage capacity with high reliability (no moving parts such as a PC fan, etc). An IP address filter function combined with three-level user authentication check also ensures security.

Also, SC-WBGW256 can be used as interface devices that convert Mitsubishi Heavy Industries Superlink-II communication data to BACnet code and are controlled centrally from a building management system.



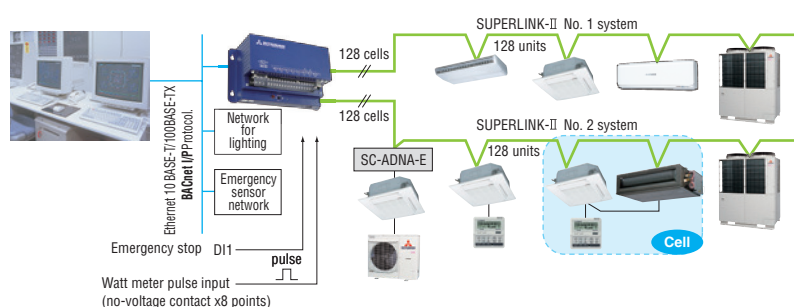
Additional engineering service cost etc. is required.
Please consult your dealer when using this central control.

[In case of web gateway]

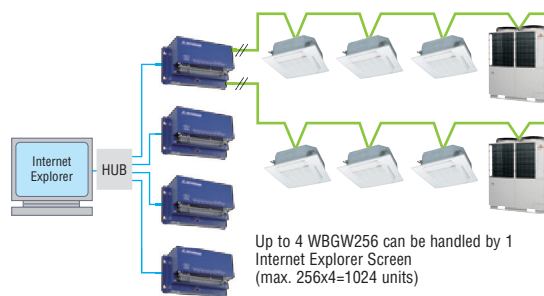


PC requirements: Windows 7 or Windows 8.1.
Monitor resolution 1364 x 768.

[In case of BACnet gateway]



Users can manage up to 1024 units by connecting the four devices!!

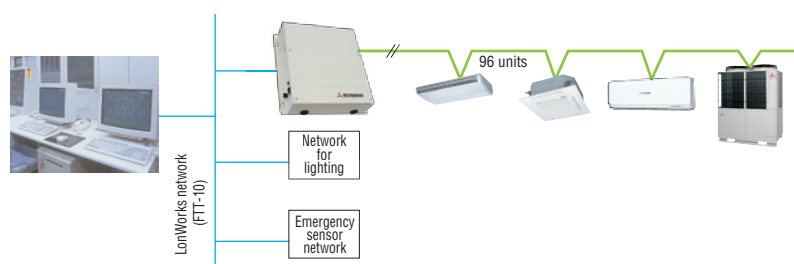


Up to 4 WBGW256 can be handled by 1 Internet Explorer Screen (max. 256x4=1024 units)

SC-LGWNB (LonWorks gateway)

Production by order

SC-LGWNB is an interface device that converts Mitsubishi Heavy Industries Superlink-II communication data to LonWorks code. Control and monitoring functions of the a/c system for up to 96 indoor units can be integrated to a central control point via the building management system network.



Additional engineering service cost etc. is required.
Please consult your dealer when using this gateway.